

* Membro Honorário da Ordem Militar de Sant'Iago de Espada



E.I. @ 2010

Breve caracterização do DOP e das suas embarcações: passado, presente e futuro.

DOP and their research vessels: past, present and future



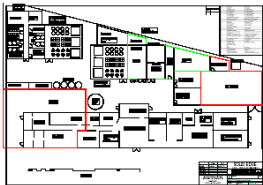
DOP – Criado em 1976 (Created in 1976)

Membro do IMAR desde 1991 (member of IMAR since 1991)

Since 2001 is member of ISR (an Associate Laboratory)



Conceptual Design of IMAR – DOP/UAç Aquaculture Research facility in Faial, Azores

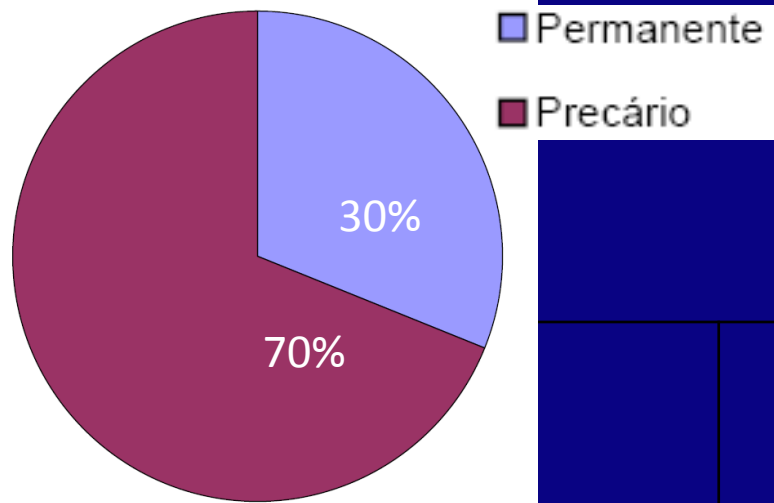


**Future:
Aquaculture?**

Report 2/01/00.000



Recursos Humanos (Human Resources)



	Permanente (Permanent)	Não permanente (Not permanent)	
C/Doutoramento (Ph.D.)	10	20	30
Graduados: Licenciados e Mestres (MSc)	3	31	34
Técnicos (Technicians)	15 (5)	15 (8)	30 (13)
Estudantes (Students) de Pós-Graduação MSc (20) & PhD (18) + ...			38
	28	66	94/132

30%

70%

(estudantes não incluídos)

Alguns projectos mais recentes:

Some of the more recent projects:



- ❑ **CORALFISH**: Assessment of the interaction between corals, fish and fisheries, in order to develop monitoring and predictive modeling tools for ecosystem based management in the deep waters of Europe and beyond. FP7-Env-2007-1: 213144.
- ❑ **MEFEPO**: Making the European Fisheries Ecosystem Plan Operational. FP7-KBBE-2007-1: 212881.
- ❑ **MADE**: Mitigating Adverse Ecological Impacts of Open Ocean Fisheries. FP7-KBBE-2007-1: 210496
- ❑ **CAREX**: Coordination Action for Research Activities on life in Extreme Environments. ENV.2007.2.2.1.6: 211700
- ❑ **HERMIONE** - Hotspot Ecosystem Research and Man's Impact on European Seas. ENV/2008/1/226354.
- ❑ **CONDOR** – Observatory for long-term study and monitoring of Azorean seamount ecosystems
- ❑ **MARPROF** – Bases para a gestão e valorização gastronómica de espécies pesqueiras da Macaronésia. Programa de Cooperação Transnacional MAC 2007-2013, ref. MAC/2/M065





Mobilidade no Mar (Mobility at the sea)

R/V "Geralda" 1930?/1976-1990



(6 a / to 7)

R/V "Arquipélago" construído em 1993 (built in 1993)



Embarcação de 26m preparada para investigação em pescas e oceanografia. (a 26m length Multipurpose research vessel for fisheries and oceanography)



Mobilidade no Mar (Mobility at the sea)

A L/I “Águas Vivas”, com 11 m de comprimento, está preparada para trabalhos costeiros e tem operado em todas as ilhas/
11m vessel for coastal work – it has been used on all the Azorean islands.

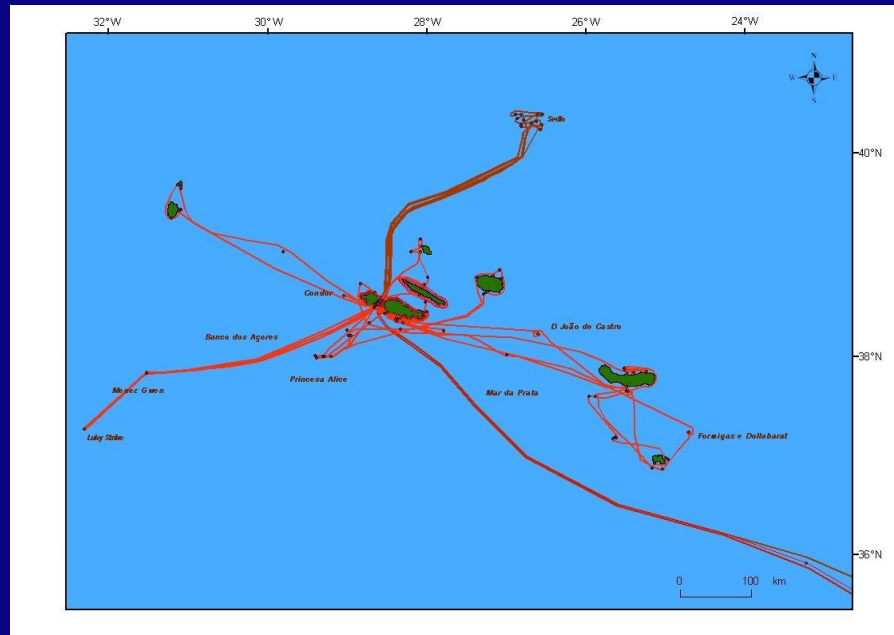


Quatro semi-rígidos para trabalhos costeiros.
Four rubber boats for coastal work

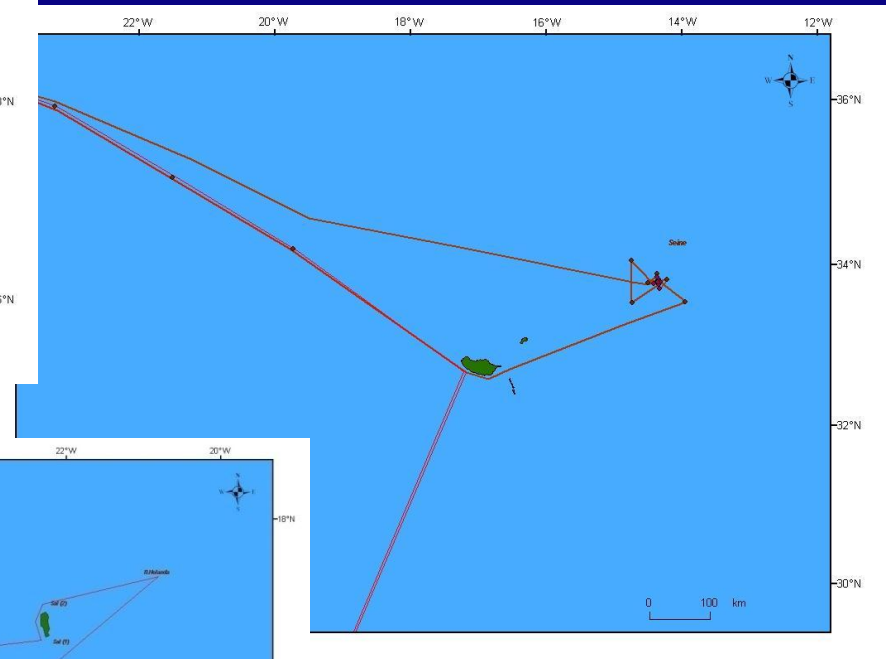




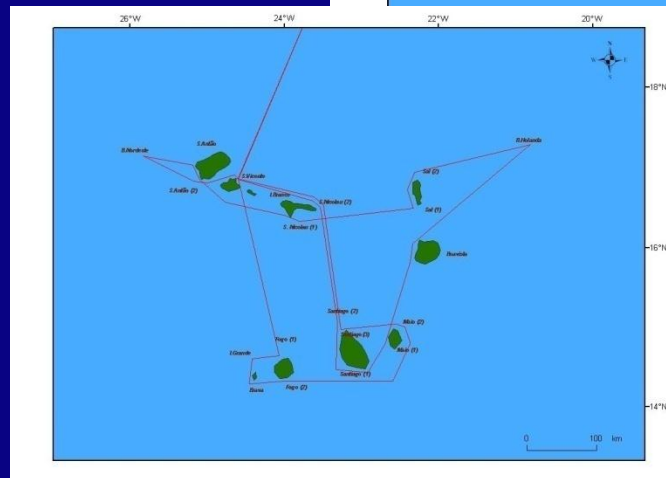
Áreas de trabalho / Operational Areas



Açores / Azores



Madeira / Madeira



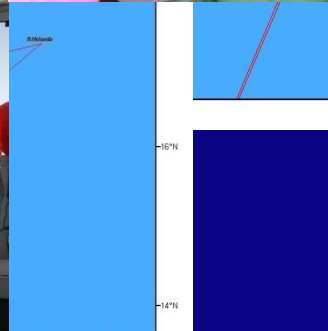
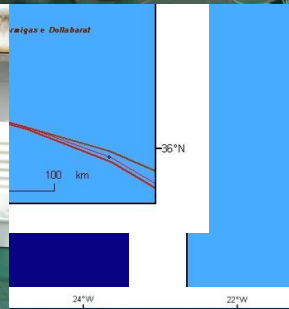
Cabo Verde / Cape Verde



Operações mais regulares/ Regular Cruises



Azores



Cabo Verde / Cape Verde



Outras missões / Other missions Oceanographic moorings

CTD / Rosette



ADCP



Redes Bongo / nets



Tucker net

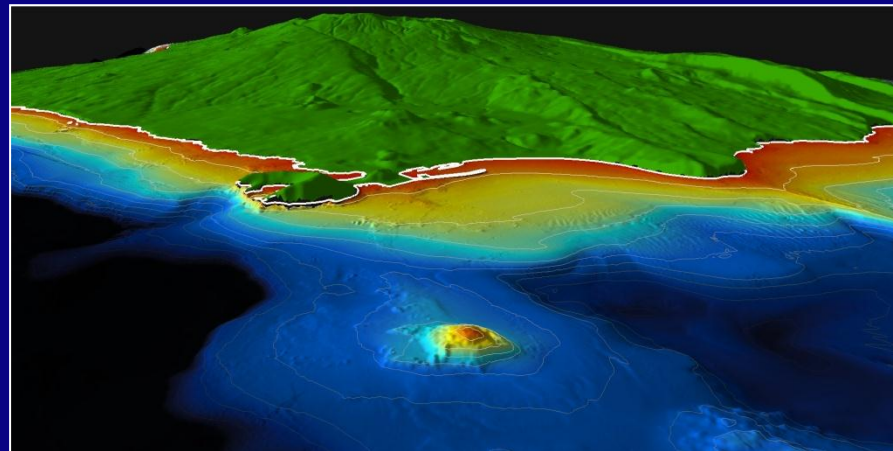
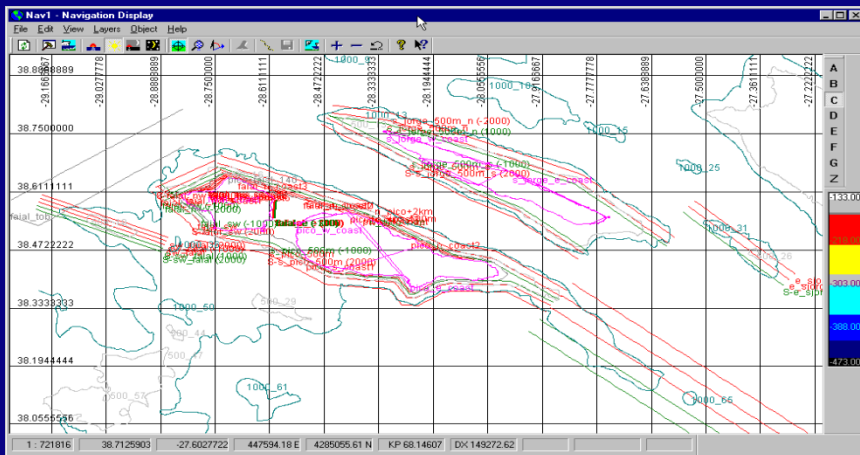
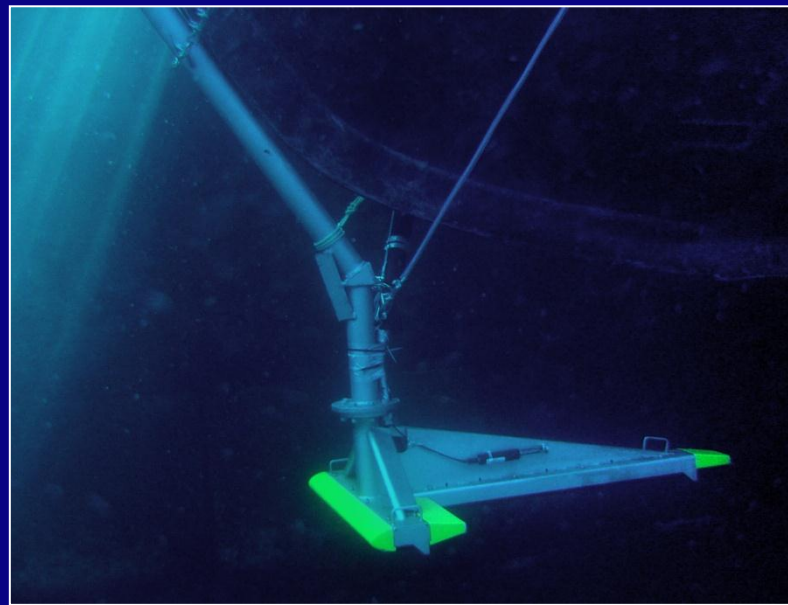


Multiclosing



Sistemas de Sondagem (Echosounding Systems)

Multibeam Sonar: Reson 8160, 50kHz beam-forming system



Cooperação / Cooperative missions



LabHorta – “*Large Scale Facility*” para estudos experimentais com organismos de profundidade.

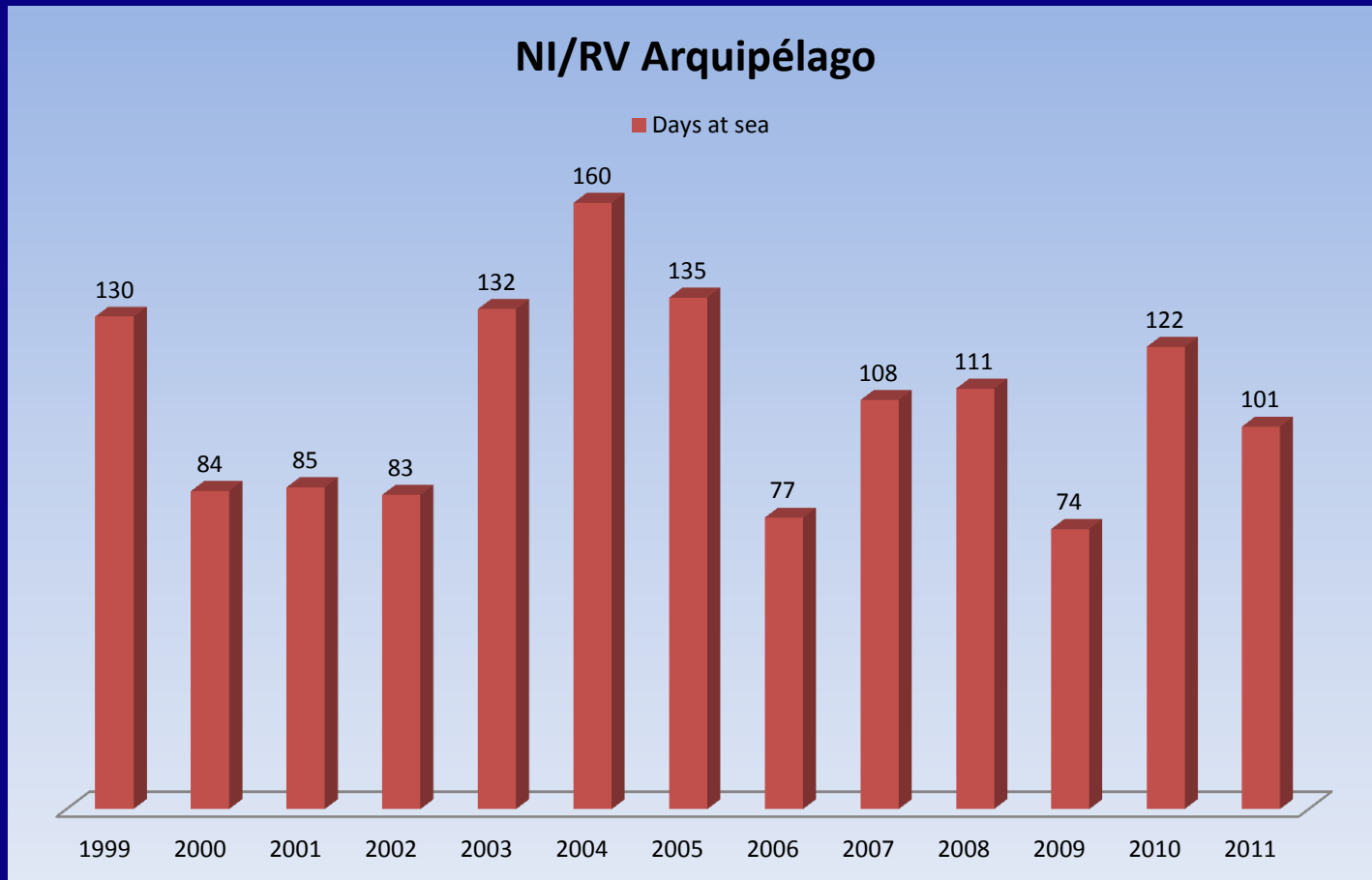


NI “Arquipélago” e NI “Atalante” encontram-se no sítio do Menez Gwen para transferência de cientistas, material biológico e colocação de jaulas.





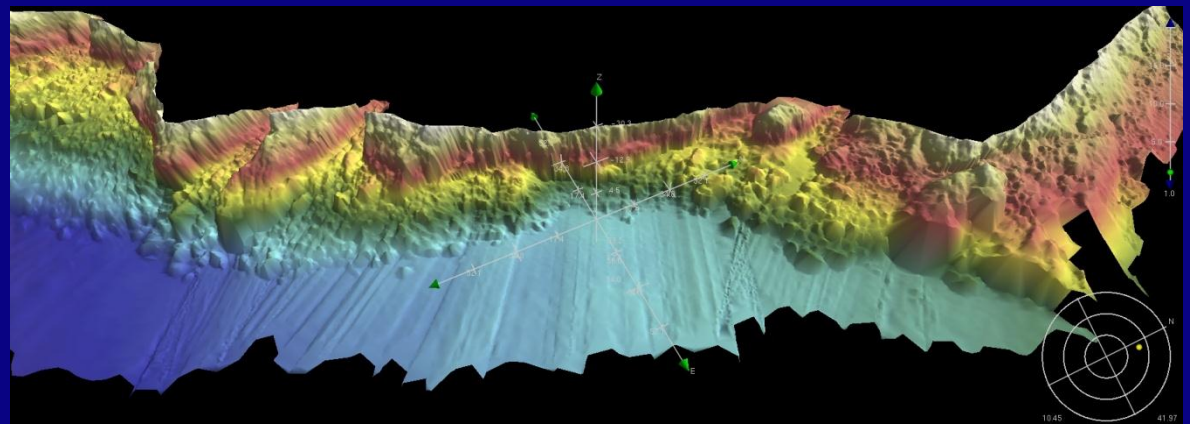
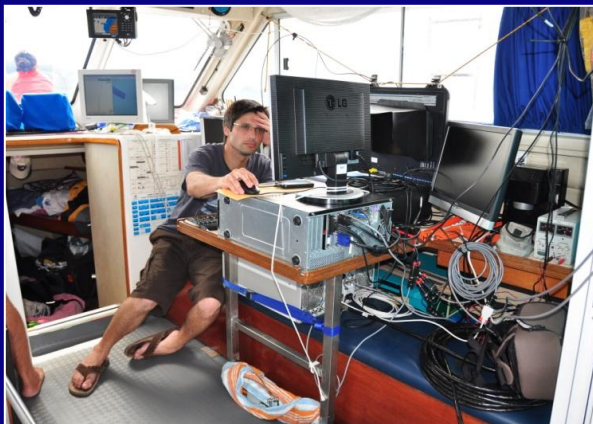
Dias de mar / Days at sea



Sistemas de Sondagem (Echosounding Systems)

Echoplus: Acoustic Ground Discrimination System

Multibeam system: Reson 8125 beam forming system

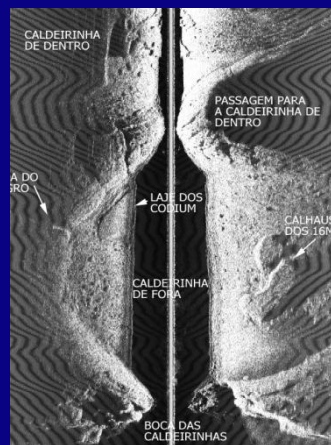
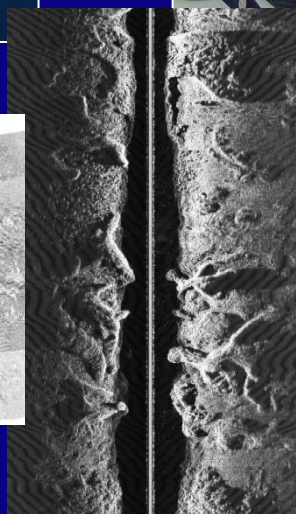
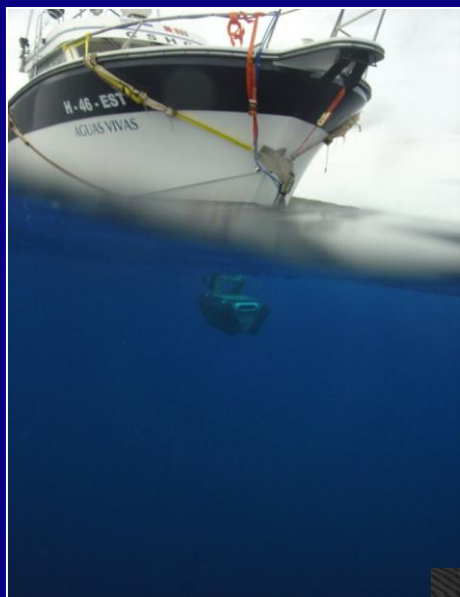




Echosounding Systems

LI Águas Vivas

Interferometric swath sonar:
SEA Swathplus, 117 kHz phase-measuring system



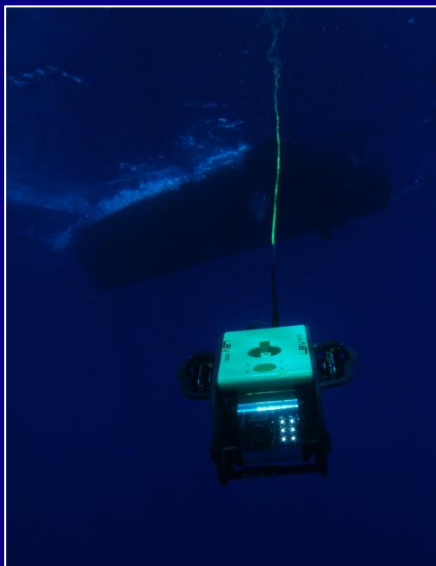


Sistemas de imagem / **Imaging Systems:** ROVs, Drop-down Cameras, AUV

Drop down camera



ROV *SP*



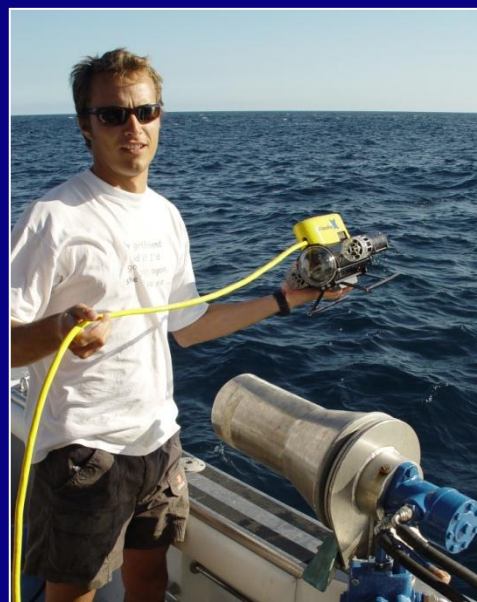
ROV Univ St Andrews

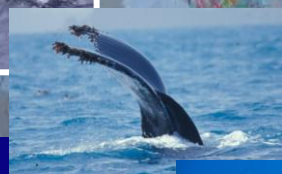
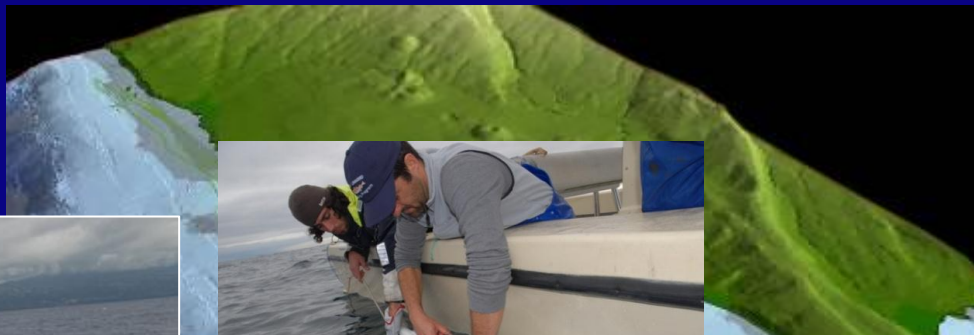


AUV – IST/ISR



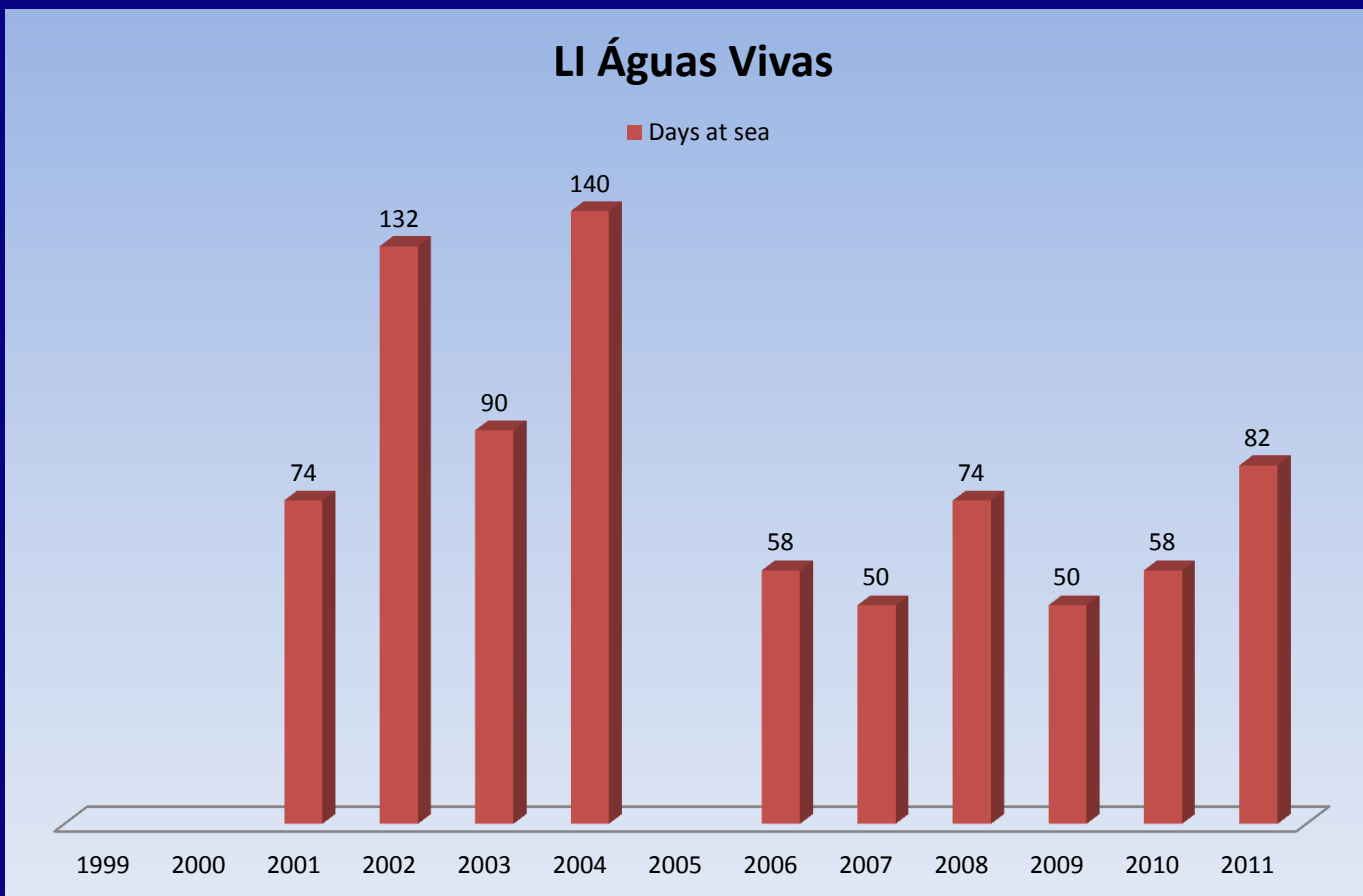
CHIRP







Dias de mar / Days at sea





Semi-rígidos/ Rubber boats



Maré Alta – 4,70m – dá apoio a missões de mergulho no N/I Arquipélago e também ações de sensibilização ambiental. (Supports diving missions on the NI Arquipélago and actions for environmental education and sensibilization)



Zífiu – 5,50m – dá apoio a trabalhos costeiros que envolvam mergulho . (coastal work / diving)



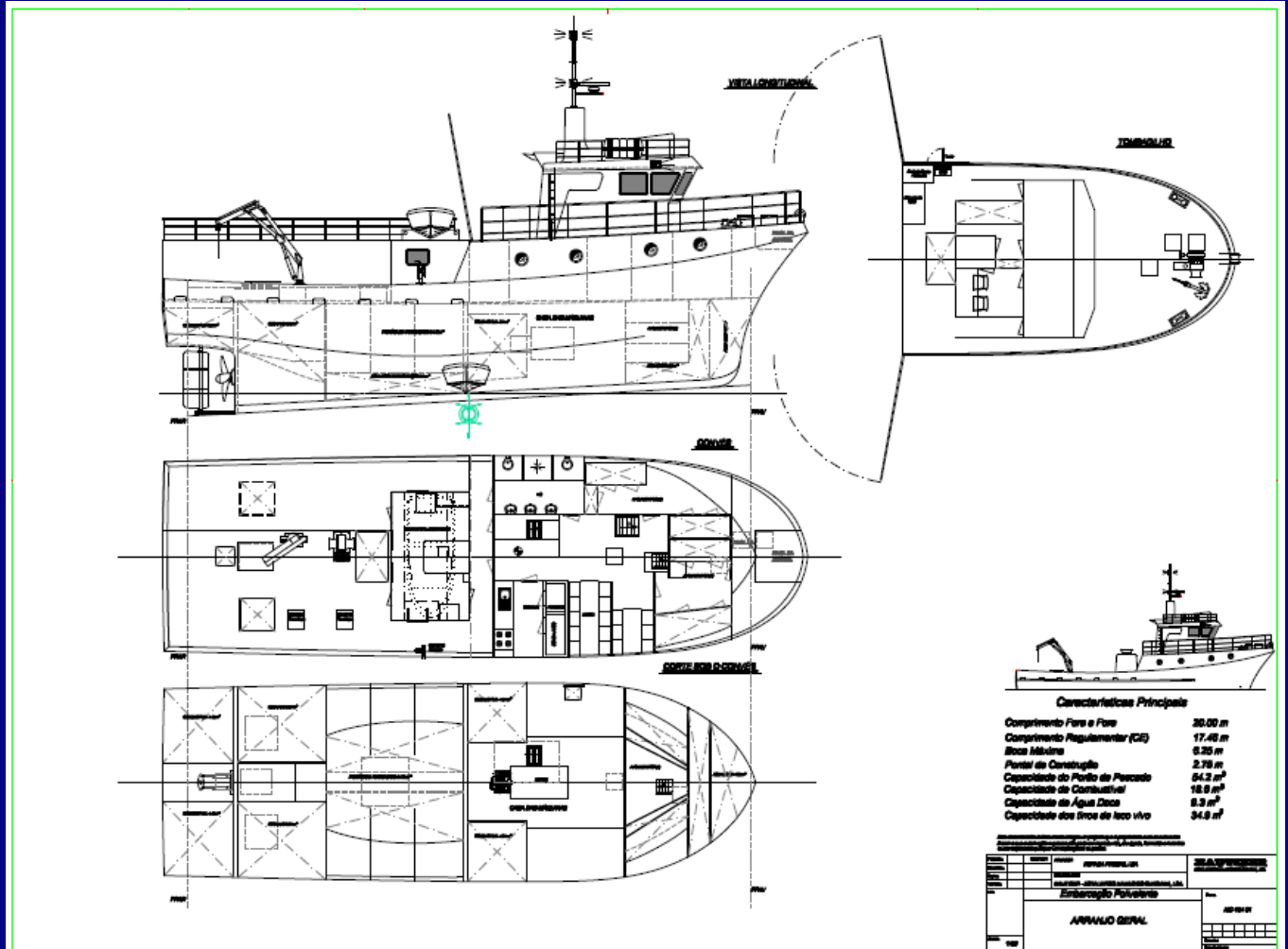
Arion – 5,70 – dá apoio a trabalhos mais afastados da costa principalmente com Cetáceos. (Supports short missions more far apart from the coast, it has been intensively used by the Cetaceans team)



Pintado – 8,60m – Aquisição recente que torna possível a realização de alguns trabalhos nos Montes Submarinos mais próximos. (Recently acquired to be used on seamounts close to istands)



The near future



The near future?

Substituição do NI Arquipélago (por um navio de 35m)
Replacement of the RV Arquipelago (26m by a 35m long)

Substituição da LI Águas Vivas
Replacement of RV Águas Vivas

CER 2005
Brussels 14-15 November 2005

communicating
european research

Bringing Europe Closer to Mid-ocean Marine Research

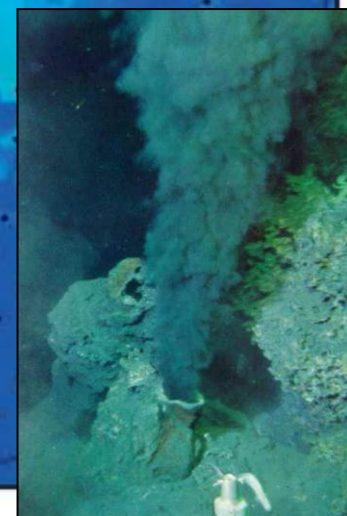
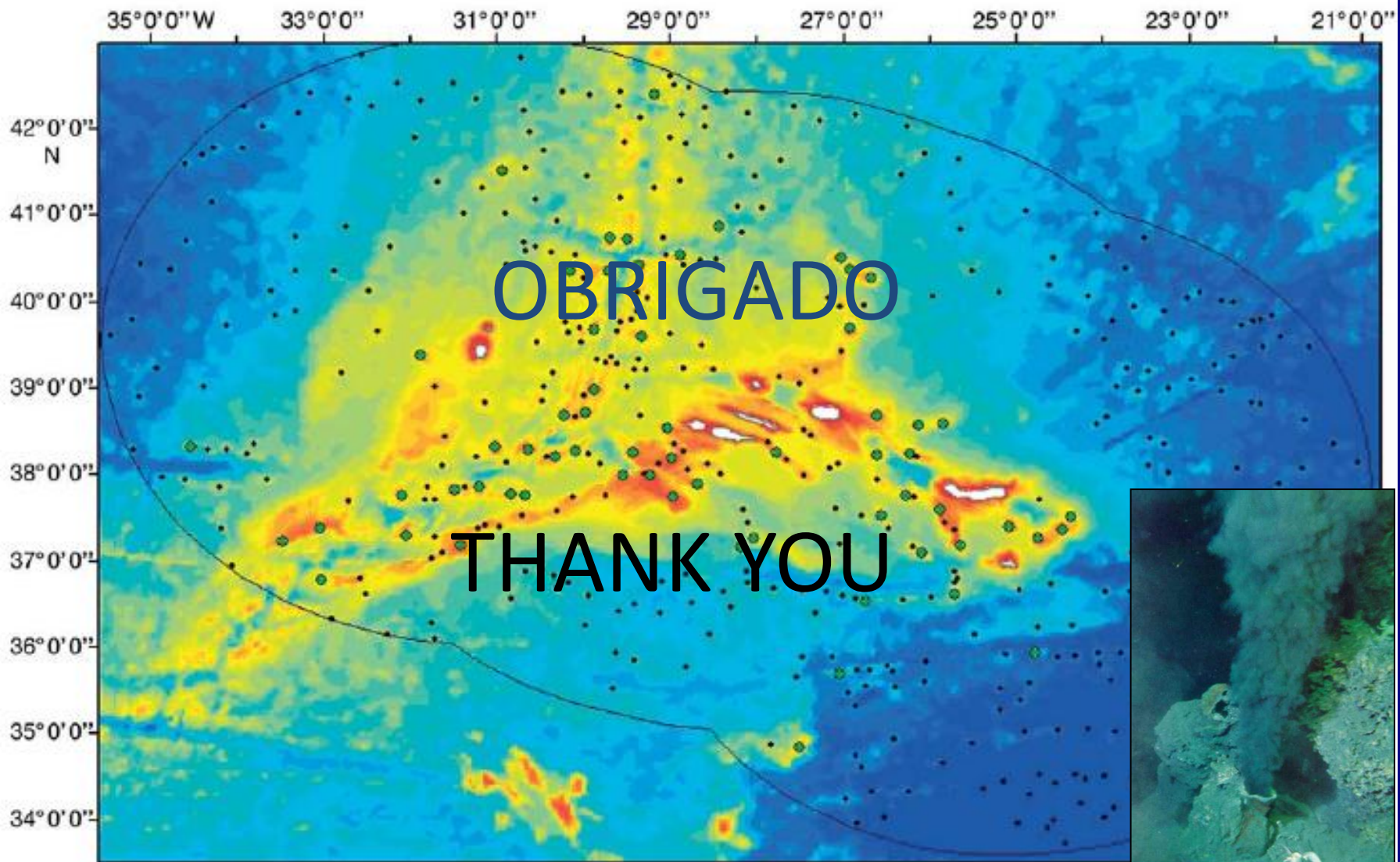
Imag DOP

UNIVERSITY OF THE AZORES
www.horta.uac.pt

Within the last ten years, ImagDOP, UAc has:

- archived more than 200,000 photo images
- provided images or scientific input for more than 500 publications
- collaborated in the production of more than 50 short films or documentaries





Inquéritos – Total capturas

